

# SUPERLAC SYNTHETIC CLEAR VARNISH



**SHALIMAR  
PAINTS**

Superlac Synthetic Clear Varnish is a high gloss varnish with excellent gloss retention and hardness. Particularly suitable for woodwork and enhancing the gloss/protection on already painted surfaces.

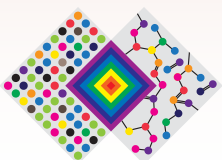
## Directions for use:

### SURFACE PREPARATION

- The surface to be painted should be dry and free from grease, oil and loose matters. The varnish can be applied after suitable thinning.

Areas of Application	Interior / Exterior Wooden Surfaces
Finish	Glossy
Average Spreading Covering	14 – 16 Sq. sq.m./lt./coat (Varies with Surface)
Drying Time	Surface Dry – within 4 hours Hard Dry – 18 hours (app.) (At 27 +/- 2 °C & R.H. 65+/-5%)
Thinner Recommended	Shalimar Turpsol
Method of Application	Brushing / Spraying
Flash Point (abel closed)	Above 30 °C

Actual technical details may vary from the quote above due to factors such as method & condition of application, type of surface & surface preparation.



THE ART & SCIENCE OF PAINTS

### Shalimar Paints Ltd.

Corp. Office: 4th Floor, Plot No. 64, Sector-44, Gurgaon -122001, Haryana (India)

P: +91-124-4616600 | F: +91-124-4616659

E: [askus@shalimarpaints.com](mailto:askus@shalimarpaints.com) | [www.shalimarpaints.com](http://www.shalimarpaints.com)

