

MAGIC ACRYLIC WALL PUTTY



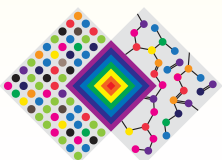
**SHALIMAR
PAINTS**

Directions for use:

Shalimar Magic Acrylic Wall Putty should be applied directly on the interior walls with painter's putty knife or mason's steel trowel. Wet film thickness of the finishing putty should be maintained around 1.5 mm to 2 mm. for each coat. Dry for 4 hours for sanding. The surface should be smoothened rubbing gently with a 320 emery paper. Remove the dust using clean cloth. Leave 8 – 10 hours for drying.

Composition	Acrylic Emulsion based Wall Putty
Nature	Thick ready to use paste
Colour	As per sample
% NVC	75 +/- 3
Specific Gravity	1.8 – 1.9
Drying time	Within 4 hours (for sanding)
Hard dry	Within 10 hours
Dry coat thickness	1 – 1.5 mm. per coat
Finish	Smooth & matt
Coverage	1 sq.m. /kg. at 1 mm. thickness
Sanding property	Good (with fine emery paper)

Actual technical details may vary from the quote above due to factors such as method & condition of application, type of surface & surface preparation.



THE ART & SCIENCE OF PAINTS

Shalimar Paints Ltd.

Corp. Office: 4th Floor, Plot No. 64, Sector-44, Gurgaon -122001, Haryana (India)

P: +91-124-4616600 | **F:** +91-124-4616659

E: askus@shalimarpaints.com | www.shalimarpaints.com

