

# XTRA MAXIMA ULTRA PREMIUM EMULSION

Shalimar Xtra Maxima is a specially designed water based emulsion having excellent dirt pickup and efflorescence resistance. Due to its elastomeric property it has an excellent crack bridging ability which helps in increasing the longevity of the walls.



**SHALIMAR  
PAINTS**



## **Directions for use:**

### **SURFACE PREPARATION**

- New surface must be cured for 28 days before painting, free from all waterproofing issues.
- Surface must be free from dirt, dust, grease, loose flaking paint etc.
- Surface infected with algae/fungi needs to be removed thoroughly by vigorous wire brushing and water jetting or should be treated by 3% solution of bleaching powder & potable water. Allow it to react for 6-8 hours.

### **PUTTY (If required)**

- Apply a thin coat of Shalimar Shakti Wall Guard Putty to fill any dents/minor hair line cracks or to smoothen the surface. Allow it to dry for 6-8 hours.

### **PRIMING**

- Apply a coat of Shalimar (Exterior Primer/ Shakti Acrylic Primer) by thinning with potable water 40-50% by volume.
- Allow it to dry for 4-6 hours.

### **TOP COAT**

- Apply 2-3 coats of Shalimar Xtra Maxima by thinning with potable water 40% by volume.
- Maintain a gap of 4-6 hours between coats.
- Avoid excess dilution for better performance.

**Application Surfaces:** All kinds of exterior plasters, concrete and masonry surfaces.

Apply an additional coat of Shalimar Xtra Maxima on horizontal surfaces or parapets for extra protection.

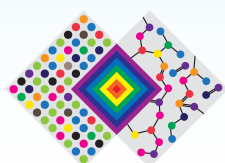


Product	Thinner	Dilution (% by Vol.)	Recoating time
Shalimar Exterior Acrylic Wall Primer	Water	60-70	4 hrs.
Shalimar Xtra Maxima	1st Coat	Water 40+/- 5	4-6 hrs.
Shalimar Xtra Maxima	2nd Coat	Water 40+/- 5	4-6 hrs.

\*27 +/- 2 °C and relative humidity 65 +/- 5%, these may vary under different conditions.

Coverage	On normal masonry surface (by brush) 1st Coat : 110 - 120 sq. ft./ltr. 2nd Coat : 65 - 75 sq. ft./ltr.
Surface Dry	30 minutes
Flash Point	N.A.
Method of Application	Brush/Roller/Spray
Area of application	Sand Cement Plaster / Concrete

Actual technical details may vary due to factors such as method & condition of application & type of surface.



THE ART & SCIENCE OF PAINTS

**Shalimar Paints Ltd.**

**Corp. Office:** 4th Floor, Plot No. 64, Sector-44, Gurgaon -122001, Haryana (India) | **P:** +91-124-4616600 | **F:** +91-124-4616659

**E:** askus@shalimarpaints.com | [www.shalimarpaints.com](http://www.shalimarpaints.com)