

# WALL NEUTRALISING CEMENT PRIMER



**SHALIMAR  
PAINTS**

It is a white cement primer. It neutralizes alklinity on plastered surface, dries quickly and offers smooth finish.

### Direction of Use:

#### SURFACE PREPARATION

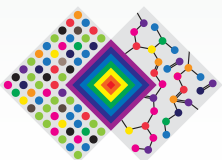
- To ensure the surface is free from rust, grease, oil & loose matter, sand the surface with emery paper 180 and wipe clean.

#### METHOD OF APPLICATION

- After proper surface preparation, apply a first coat of primer depending on the surface of application. Allow drying for 6 – 8 hours. Smoothen the surface by filling dents with thin coat of putty and allow it to dry for 6 – 8 hours. Sand the surface with emery paper 180 and wipe clean. Apply another coat of primer and allow drying for 6 – 8 hours. Sand the surface with Emery paper 320 and wipe clean.
- Shalimar Wall Neutralizing Cement Primer can be applied with Brush / Spray.

Finish	Smooth & Matt
Coverage	120 – 140 sq. ft. per litre per coat by brush application
Flash Point	34°C (by Abel closed)
Supply Viscosity	100 + / -20 seconds (by FC4 at 30°C)
Surface Dry	Within 1 hour (at 30 + / -1°C & 65 + / -5% R.H)
Recoat Time	12 hours minimum
Thinner	Turpsol / GP Thinner
Pack Size	1 litre / 4 litre
Shades available	White
Areas of application	Exterior / Interior surfaces of plaster, concrete, brick work, asbestos

Actual technical details may vary due to factors such as method & condition of application & type of surface.



THE ART & SCIENCE OF PAINTS

**Shalimar Paints Ltd.**

**Corp. Office:** 4th Floor, Plot No. 64, Sector-44, Gurgaon -122001, Haryana (India)

**P:** +91-124-4616600 | **F:** +91-124-4616659

**E:** askus@shalimarpaints.com | www.shalimarpaints.com

