

SUPERLAC SATIN FINISH ENAMEL



**SHALIMAR
PAINTS**

Shalimar Superlac Satin Finish is a soft sheen synthetic paint for both exterior and interior application. It has fast drying property along with smooth application, excellent leveling and long lasting protection. It provides luxurious satin finish with softness of petals to the substrate.



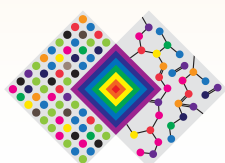
Directions for use:

- Ensure the surface is dry and free from rust, dust, grease, oil and loose particle. All surfaces should be thoroughly rubbed using emery paper 180 and wipe clean.
- After proper surface preparation, apply 1st coat of suitable primer - Shalimar Wood Primer/Metal Primer/Wall Primer depending on the substrate. Allow it to dry overnight.
- Use suitable emery paper of 320 grade or higher and wipe off the dust. Apply Magic Acrylic Putty if further smoothness is required. Apply 2nd coat of primer on putty surface.
- Sand the surface with emery paper mentioned above and wipe off the dust. Apply 2nd coat of Superlac Satin Finish over the primed surface with an interval of 8 hours minimum.
- Apply thin 10 parts of paints with 1 part of recommended thinner.
Normally, two coats are sufficient for complete opacity. If a strong color change is required, an extra coat of Superlac Satin Finish is recommended.



Finish	Smooth with satin gloss
Coverage	180 – 200 sq. ft. per litre per coat. (on smooth non absorbent surface by brush application)
Supply Viscosity	120 + / -10 seconds (By FC4 at 30°C)
Surface Dry	3 hours (at 30°C + / -1C & 65 + / -5% R.H)
Recoat Time	8 hours minimum
Thinner	Turpsol / GP Thinner
Flash Point	34°C (by Abel closed)
DFT	20 - 25 microns (excluding black), 15-20 microns (black) per coat
Primer	Shalimar WNCP (for concrete), Shalimar Wood Primer (for wood surface), Shalimar Red Oxide Primer (for ferrous) and Shalimar ETCH primer (for non ferrous)
Pack Size	1 litre / 4 litre
Area of Application	Metal, Wood, Plaster, Concrete, Truck/bus bodies, Signboards and all architectural jobs for both interior and exterior surfaces

Actual technical details may vary due to factors such as method & condition of application & type of surface.



THE ART & SCIENCE OF PAINTS

Shalimar Paints Ltd.

Corp. Office: 4th Floor, Plot No. 64, Sector-44, Gurgaon -122001, Haryana (India) | **P:** +91-124-4616600 | **F:** +91-124-4616659

E: askus@shalimarpaints.com | www.shalimarpaints.com