

# SUPERLAC HI-GLOSS ENAMEL



**SHALIMAR  
PAINTS**

A premium solvent based multipurpose synthetic enamel offering smooth high gloss finish. With benefits like excellent coverage, opacity along with fast drying and durability, makes it a superior enamel in its class.



## Directions for use:

### SURFACE PREPARATION

- Sand surface with 180 emery paper to remove dirt, dust, oil, grease, algae, fungi, old paint etc., and wipe it clean.

### PRIMING

- Apply a coat of primer depending on surface:
  - Ferrous metal surfaces - Shalimar Red Oxide Metal Primer.
  - Non-ferrous metal surfaces - Shalimar ETCH Primer.
  - Wooden surfaces - Shalimar (Grey Primer / Pink Primer/ Universal White Primer).
  - Masonry surfaces - Shalimar (Wall Neutralizing Cement Primer / Universal White Primer).
  - Allow it to dry for 6-8 hours.

### PUTTY

- Apply thin coat of Shalimar Magic Acrylic Wall Putty to smoothen surface ( for masonry & wood surface)
- Allow it to dry for 6-8 hours. Sand surface with 180/320 emery paper and wipe it clean.
- Apply an additional coat if appropriate and sand as above.

### PRIMING

- Apply 2nd coat of primer depending upon the surface and allow it to dry for 6-8 hours.
- Sand surface with 320 emery paper and wipe it clean.

### TOP COATS

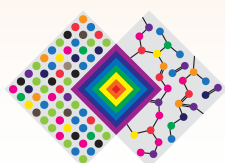
- Thin Superlac Hi- Gloss with Shalimar Turpsol Thinner, 5-7 % by volume for brush application or 20% by volume for spray application.
- Apply 2 coats of Superlac Hi- Gloss with an interval of minimum 8 hours.

**Application Surfaces:** Metal surfaces, wooden surfaces and masonry surfaces.



|                     |  |
|---------------------|--|
| Finish              | Smooth & full glossy   |
| Coverage            | 180 – 210 sq. ft. per litre per coat. (by brush application on metallic surface)   |
| Supply Viscosity    | 105 + / -5 seconds (By FC4 at 30°C)  |
| Surface Dry         | 4 hours (at 30°C + / -1°C & 65 + / -5% R.H)  |
| Recoat Time         | 12 hours minimum   |
| Thinner             | Turpsol / GP Thinner   |
| Flash Point         | 34°C (by abel closed)  |
| DFT                 | 20 - 25 microns (excluding black), 15-20 microns (black) per coat  |
| Primer              | Shalimar WNCP (for concrete), Shalimar Wood Primer (for wood surface), Shalimar Red Oxide Primer (for ferrous) and Shalimar etch primer (for non ferrous)  |
| Pack Available      | 50ml / 100 ml / 200 ml / 500 ml / 1 litre / 4 litre / 10 litre / 20 litre  |
| Area of application | Metal, Wood, Plaster, Concrete, Trucks/Buses, Signboards, Doors, Windows, Cupboards, Wooden Furniture, Particle Boards, Grills, Shutters & all other Architectural jobs for both exterior & interior surfaces. |

Actual technical details may vary from the quote above due to factors such as method & condition of application, type of surface & surface preparation.



THE ART & SCIENCE OF PAINTS

**Shalimar Paints Ltd.**

**Corp. Office:** 4th Floor, Plot No. 64, Sector-44, Gurgaon -122001, Haryana (India) | **P:** +91-124-4616600 | **F:** +91-124-4616659

**E:** askus@shalimarpaints.com | **www.shalimarpaints.com**