

# SUPERLAC HI-GLOSS ENAMEL



**SHALIMAR  
PAINTS**

A premium solvent based multipurpose synthetic enamel offering smooth high gloss finish. With benefits like excellent coverage, opacity along with fast drying and durability, makes it a superior enamel in its class.



## Directions for use:

### SURFACE PREPARATION

- Sand surface with 180 emery paper to remove dirt, dust, oil, grease, algae, fungi, old paint etc., and wipe it clean.

### PRIMING

- Apply a coat of primer depending on surface:
  - Ferrous metal surfaces - Shalimar Red Oxide Metal Primer.
  - Non-ferrous metal surfaces - Shalimar ETCH Primer.
  - Wooden surfaces - Shalimar (Grey Primer / Pink Primer/ Universal White Primer).
  - Masonry surfaces - Shalimar (Wall Neutralizing Cement Primer / Universal White Primer).
  - Allow it to dry for 6-8 hours.

### PUTTY

- Apply thin coat of Shalimar Magic Acrylic Wall Putty to smoothen surface ( for masonry & wood surface)
- Allow it to dry for 6-8 hours. Sand surface with 180/320 emery paper and wipe it clean.
- Apply an additional coat if appropriate and sand as above.

### PRIMING

- Apply 2nd coat of primer depending upon the surface and allow it to dry for 6-8 hours.
- Sand surface with 320 emery paper and wipe it clean.

### TOP COATS

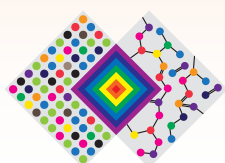
- Thin Superlac Hi- Gloss with Shalimar Turpsol Thinner, 5-7 % by volume for brush application or 20% by volume for spray application.
- Apply 2 coats of Superlac Hi- Gloss with an interval of minimum 8 hours.

**Application Surfaces:** Metal surfaces, wooden surfaces and masonry surfaces.



Finish	Smooth & full glossy
Coverage	180 – 210 sq. ft. per litre per coat. (by brush application on metallic surface)
Supply Viscosity	105 + / -5 seconds (By FC4 at 30°C)
Surface Dry	4 hours (at 30°C + / -1°C & 65 + / -5% R.H)
Recoat Time	12 hours minimum
Thinner	Turpsol / GP Thinner
Flash Point	34°C (by abel closed)
DFT	20 - 25 microns (excluding black), 15-20 microns (black) per coat
Primer	Shalimar WNCP (for concrete), Shalimar Wood Primer (for wood surface), Shalimar Red Oxide Primer (for ferrous) and Shalimar etch primer (for non ferrous)
Pack Available	50ml / 100 ml / 200 ml / 500 ml / 1 litre / 4 litre / 10 litre / 20 litre
Area of application	Metal, Wood, Plaster, Concrete, Trucks/Buses, Signboards, Doors, Windows, Cupboards, Wooden Furniture, Particle Boards, Grills, Shutters & all other Architectural jobs for both exterior & interior surfaces.

Actual technical details may vary from the quote above due to factors such as method & condition of application, type of surface & surface preparation.



THE ART & SCIENCE OF PAINTS

**Shalimar Paints Ltd.**

**Corp. Office:** 4th Floor, Plot No. 64, Sector-44, Gurgaon -122001, Haryana (India) | **P:** +91-124-4616600 | **F:** +91-124-4616659

**E:** askus@shalimarpaints.com | **www.shalimarpaints.com**