

# SUPER SHAKTIMAN

## Durable Exterior Emulsion

A water-based exterior acrylic emulsion with silicon additives that offers excellent durability and protection against any climatic conditions. Its algal resistance property along with anti-fading, anti-flaking benefits offers beautiful walls for years.



## SHALIMAR PAINTS



TOUGH & DURABLE



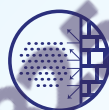
ANTI FLAKING



ANTI FADING



ALGAL  
RESISTANCE

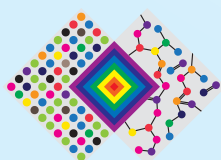


PROTECTION AGAINST  
DIRT & DUST

RECOMMENDED AREAS OF APPLICATION	Area of Use	Exterior			
	Substrate	Concrete, Plaster, Masonry			
TECHNICAL DATA	Color Range	Exterior Emulsion Shade Card & Color Space Fandeck Shades			
	Finish	Smooth & Matt			
	*Coverage	1 coat - 100-120 sq. ft/ltr 2 coats - 40 - 60 sq. ft/ltr <small>*Performance may vary due to factors such as method and condition of application, surface roughness and porosity.</small>			
	Ambient Temperature	Dry to Touch (RH-60)	Overcoating Interval		
			Minimum	Maximum	
		20°C	30 min	240 min	Overnight
		30°C	15 - 30 min	180 min - 240 min	Overnight
	40°C	15 min	180 min	Overnight	
Washability	Medium				
APPLICATION DATA	Recommended Tools	Brush/Roller/Conventional Spray			
	Thinning Recommended	Potable Water			
	Thinner ratio	40% -60%			
SURFACE PREPARATION	<ul style="list-style-type: none"> <li>New surface must be cured for 28 days before painting and free from all waterproofing issues.</li> <li>Sand surface with 180 emery paper to remove dirt, dust, grease, loose flaking paint, algae, fungi etc. Wipe it clean.</li> </ul>				



<b>PUTTY</b>	Apply a thin coat of Shalimar Shakti Wall Guard Putty to fill any dents/minor hair line cracks or to smoothen the surface. Allow it to dry for 6-8 hrs.	
<b>RECOMMENDED PRIMER</b>	Apply a coat of of Shalimar (Exterior Primer/Shakti Exterior Acrylic Primer) by thinning with potable water 40-50% by volume. Allow it to dry for 4-6 hrs.	
<b>TOP COAT 1 COAT</b>	Super Shaktiman Emulsion	
<b>TOP COAT 2 COATS</b>	Super Shaktiman Emulsion	
**** For Horizontal Surface or Parapets etc., 3rd Coat is recommended if necessary.		
<b>PACKAGING</b>	Packs Available	1 ltr/4 ltrs/10 ltrs/20 ltrs
	Shelf life	3 years
<b>SAFETY &amp; PRECAUTIONS</b>	<ul style="list-style-type: none"><li>• Stir well before thinning. Avoid extra thinning.</li><li>• Wear suitable nose protection during sanding and surface preparation to avoid dust inhalation. Do not breathe vapors or spray.</li><li>• In case of eye/skin contact, rinse with water and seek immediate medical attention.</li><li>• Do not pour leftover paint down the drain. Ensure that there is adequate ventilation in the area where the product is being applied.</li><li>• Container Lid must be closed tightly and stored in cool dry place.</li><li>• Keep out of reach of children.</li></ul>	



THE ART & SCIENCE OF PAINTS

**Shalimar Paints Ltd.**

**Corp. Office:** 4<sup>th</sup> Floor, Plot No. 64, Sector-44, Gurgaon -122001, Haryana (India) | **P:** +91-124-4616600 | **F:** +91-124-4616659  
**E:** askus@shalimarpaints.com | [www.shalimarpaints.com](http://www.shalimarpaints.com)