

NO.1 SILK

Interior Acrylic Emulsion

A water-based acrylic emulsion offering smooth and luxurious matt finish with higher opacity and excellent coverage. Designed for fast drying and quick recoatability makes it a quality paint.



SHALIMAR PAINTS



**SMOOTH &
LUXURIOUS FINISH**



HIGHER OPACITY



EXCELLENT COVERAGE



QUICK RECOATABILITY

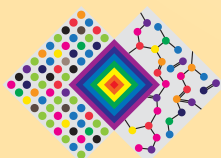


LONG LASTING

RECOMMENDED AREAS OF APPLICATION	Area of Use	Interior			
	Substrate	Concrete, Plaster, Masonry			
TECHNICAL DATA	Color Range	Interior Emulsion Shade Card & Color Space Fandek Shades			
	Finish	Smooth & Matt			
	*Coverage	1 coat - 250-270 sq. ft/ltr 2 coats - 130 - 150 sq. ft/ltr <small>*Performance may vary due to factors such as method and condition of application, surface roughness and porosity.</small>			
	Ambient Temperature	Dry to Touch (RH-60)	Overcoating Interval		
			Minimum	Maximum	
		20°C	30 min	240 min	Overnight
		30°C	15 - 30 min	180 min - 240 min	Overnight
	40°C	15 min	180 min	Overnight	
Washability	Medium				
APPLICATION DATA	Recommended Tools	Brush/Roller/Spray (Conventional Spray)			
	Thinning Recommended	Potable Water			
	Thinner ratio	40-50%			
SURFACE PREPARATION	<ul style="list-style-type: none"> New surface must be cured for 28 days before painting and free from all waterproofing issues. Sand surface with 180 emery paper to remove dirt, dust, grease, loose flaking paint, algae, fungi etc. Wipe it clean. 				



RECOMMENDED PRIMER	Apply a coat of Shalimar (No.1 Primer/WTCP/Wall Neutralizing Cement Primer/ Universal White Primer) as per recommendation. Allow it to dry for 6-8 hrs.
PUTTY	Level the surface with Shalimar Magic Acrylic Wall Putty and allow it to dry for 4-6 hrs.
RECOMMENDED PRIMER	Apply a coat of Shalimar (No.1 Primer/WTCP/Wall Neutralizing Cement Primer/ Universal White Primer) as per recommendation. Allow it to dry for 6-8 hrs.
TOP COAT 1 COAT	No.1 Silk Emulsion
TOP COAT 2 COATS	No.1 Silk Emulsion
PACKAGING	Packs Available 1 ltr/4 ltrs/10 ltrs/20 ltrs
	Shelf life 3 years
SAFETY & PRECAUTIONS	<ul style="list-style-type: none">• Stir well before thinning. Avoid extra thinning.• Wear suitable nose protection during sanding and surface preparation to avoid dust inhalation. Do not breathe vapors or spray.• In case of eye/skin contact, rinse with water and seek immediate medical attention.• Do not pour leftover paint down the drain. Ensure that there is adequate ventilation in the area where the product is being applied.• Container Lid must be closed tightly and stored in cool dry place.• Keep out of reach of children.



THE ART & SCIENCE OF PAINTS

Shalimar Paints Ltd.

Corp. Office: 4th Floor, Plot No. 64, Sector-44, Gurgaon -122001, Haryana (India) | **P:** +91-124-4616600 | **F:** +91-124-4616659
E: askus@shalimarpaints.com | www.shalimarpaints.com