



**SHALIMAR  
PAINTS**

## SELF CLEAN LUXURY EMULSION

Shalimar Self Clean is an innovative luxury acrylic emulsion designed to keep the façade clean and dry for long. Its unique composition rolls water into tiny balls and slides them off across the surface of the wall, washing off the dirt. So every rain shower or splash of water renders cleaner look to the walls. Equipped with UV Resistant Technology, Self-Clean Emulsion deliver high sheen to the walls by preventing the formation of algae, fungi and moss.



### Directions for use:

#### SURFACE PREPARATION

- New surface must be cured for 28 days before painting and free from all waterproofing issues.
- Surface must be free of dirt, dust, grease, loose flaking paint etc.
- Surface infected with algae/fungi needs to be removed thoroughly by vigorous wire brushing and water jetting or should be treated by 3% solution of bleaching powder & potable water. Allow it to react for 6-8 hours.

#### PUTTY (If required)

- Apply a thin coat of Shalimar Shakti Wall Guard Putty to fill any dents/minor hair line cracks or to smoothen the surface. Allow it to dry for 6-8 hours.

#### PRIMING

- Apply a coat of Shalimar (Exterior Primer/ Shakti Acrylic Primer) by thinning with potable water 40-50% by volume.
- Allow it to dry for 4-6 hours.

#### TOP COAT

- Apply 2-3 coats of Shalimar Self Clean by thinning with potable water 20% by volume.
- Maintain a gap of 4-6 hours between coats.
- Avoid excess dilution for better performance.

**Application Surfaces:** All kinds of exterior plasters, concrete and masonry surfaces.

Apply an additional coat of Shalimar Self Clean on horizontal surfaces or parapets for extra protection.

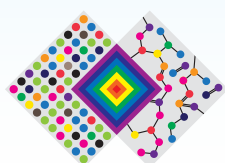


Dilution	15-20% by volume with clean potable water
Clean-Up	Clean the equipment with water immediately after use
Application	Brush: 15-20% with water, Roller: 10-15% with water
Finish	Smooth
Cleaning	By water
Gloss	Semi-gloss
Density	1.3
Solids	55
Practical Coverage	9-10 m <sup>2</sup> / litre / 2 coats (Actual coverage is dependant on the surface condition)
Recommended Film Thickness	40-45 microns
Recommended Thinner	Potable Water
Dry Time	77°F (25°C) & 50 RH
To Touch	30 Minutes
To Recoat	4-6 Hours
Shelf Life	3 years
Product Limitations	1) Over thinning must be avoided 2) The surface should not be subject to unusual contact

Actual technical details may vary due to factors such as method & condition of application & type of surface.

## Precautions:

- Avoid painting when the temperature is below 10 degrees Celsius
- Painting is not recommended if the moisture content and alkalinity of the walls is high
- Moisture content of the walls should be below 16% (measured by a Protimeter) and alkalinity of the wall should be below pH-9
- Relative humidity should be below 85%
- Painting on a newly plastered wall is recommended after 12 weeks of curing. Don't thin the paint excessively (not more than 25% by v/v)
- For dark shades, 3 coats are recommended for a complete finish
- All horizontal surfaces required three coats of top coat for better fungal/Algae protection
- White cement, lime are not recommended as an undercoat for optimum film performance



THE ART & SCIENCE OF PAINTS

**Shalimar Paints Ltd.**

**Corp. Office:** 4th Floor, Plot No. 64, Sector-44, Gurgaon -122001, Haryana (India) | **P:** +91-124-4616600 | **F:** +91-124-4616659

**E:** askus@shalimarpaints.com | **www.shalimarpaints.com**