

NO. 1 PREMIUM ACRYLIC DISTEMPER



**SHALIMAR
PAINTS**

A water-based interior wall distemper with better opacity and high coverage offering rich matt finish. Its non-chalking and washable features give brighter and cleaner shades resulting in beautiful smooth walls.



Directions for use:

SURFACE PREPARATION

- New surface must be cured for 28 days before painting and free from all waterproofing issues
- Sand surface with 180 emery paper to remove dirt, dust, grease, loose flaking paint, algae, fungi etc. Wipe it clean.

PRIMING

- Apply a coat of Shalimar (Water Thinnable Cement Primer/ Wall Neutralizing Cement Primer / Universal White Primer) as per recommendation. Allow it to dry for 6-8 hours.
- Spot prime before and after filling nail holes, cracks, and other surface imperfections.

PUTTY

- Level the surface with Shalimar Magic Acrylic Wall Putty. Allow it to dry for 4-6 hours.
- Sand surface with 180/320 emery paper and wipe it clean.

PRIMER

- Apply an additional coat of the above mentioned primers and allow it to dry for 6-8 hours.
- Sand Surface with 320 emery paper and wipe it clean.

TOP COAT APPLICATION

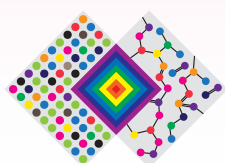
- Apply 2-3 coats of No. 1 Premium Acrylic Distemper by thinning it with potable water 50-100% by volume.
- Maintain a gap of 4-6 hours between coats.
- Application can be done by brush, roller or conventional spray.

Application Surfaces: All kinds of interior plasters, concrete and masonry surfaces.
For deep shades apply an additional coat of No. 1 Premium Acrylic distemper.



Finish	Smooth & Matt
Coverage	180 – 200 sq. ft. per kg per coat. (on primed putted smooth surface by brush application)
Supply Viscosity	Smooth paste
Surface Dry	Within 20 minutes (at 30°C + / -1C & 65 + / - 5% R.H)
Recoat Time	3 hours minimum
Thinner	Potable water
Primer	Shalimar Wall Neutralising Cement Primer (for new plaster), Shalimar Water thinnable Cement Primer (for old painted surface), Shalimar Universal White Primer
Pack Size	1 kg / 2 kg / 5 kg / 10 kg / 20 kg
Area of Application	Interior surfaces of plasters, concrete / brick work, asbestos

Actual technical details may vary due to factors such as method & condition of application & type of surface.



THE ART & SCIENCE OF PAINTS

Shalimar Paints Ltd.

Corp. Office: 4th Floor, Plot No. 64, Sector-44, Gurgaon -122001, Haryana (India) | **P:** +91-124-4616600 | **F:** +91-124-4616659

E: askus@shalimarpaints.com | **www.shalimarpaints.com**

